



Zertifiziert nach  
DIN EN ISO 9001:2000

Microsoft  
CERTIFIED  
Partner

# ifD ENGINEERING JOINT VENTURE

Member of **ifD** GROUP

19W, Tzar Boris III Str., 1612 Sofia, Bulgaria, tel. (+359 2) 951 67 66, tel./fax (+359 2) 951 67 73, www.ifd-sofia.com

## ifD digiStore

A system for managing modern stock stores in machinery construction, trade and logistics

### IFD DIGISTORE CONCEPT

**ifD digiStore** is an integrated stock-logistics system satisfying the market requirements for modern software for administration, management and optimization of the stocks. It is a result from a 15 years of experience in joint realization of logistics projects with customers from different branches such as:

- car producers and their vendors;
- trade, machinery industry;
- logistic and shipping companies

The modular architecture of **ifD digiStore** offers maximum adaptation to the customers' needs.

### COMPLETE SOLUTION FOR YOUR LOGISTICS

Often the stock management functions in ERP systems do not fulfill the requirements of the stores with specific structure and heterogeneous distribution of the stock cells. Full integration of the stock in ERP means also complete dependency of the central organization and when there is an ERP breakdown, the store stops operating.

**ifD digiStore** can serve a number of parallel working stocks. The system offers features for managing and optimizing stores working with automatic transport means or wireless managing systems.

### MODULAR CONCEPT

**ifD digiStore** functions cover all the requirements for flexible and adaptive stock management. The following modules are part of the standard package:

- Base data maintenance;
- System parameterization;
- Stock amount on hand;
- Taking in goods;
- Taking out goods;
- Logistics management center;
- Transferring goods and supplying stock;
- Sale on commission (with or without voucher);
- Packaging and dispatching;
- Making inventory;
- Tax fee calculations for stock services;
- Graphical visualization of the equipment and processes;
- Managing interfaces

### BASE DATA

The access to the functions for base data is provided by simple and clear navigation menus. Data is entered, edited or displayed in pop-up windows, and wild card searches are available. Base data from ERP client's system such as articles, clients, vendors, etc. can be integrated in **ifD digiStore** to avoid data duplications.

### PARAMETRIZATION

**ifD digiStore** supports 999 companies and different languages. It offers individual stock management by companies

which is usually used by shipping agents. The stock of each company can be administered from one and the same different stock resources. The system allows adding additional attributes required by the users.

### STORE CONFIGURATION

The options for individual configuration of each store solve the issue with a large variety of stores- block store, manually controlled store, basement store, rack store, and others. **ifD digiStore** manages centrally the different stores. The coordinates of the store, the numbering of the hallways and other parameters are defined according to client's requirements to be in accordance with the material store.

### TYPES OF STOCK CELLS

A store can have different types of stock cells such as pallets, shelves, racks, etc. They are associated with the supporting transport means, and **ifD digiStore** can perform the respective checks for weight, volume and dimensions at automatic booking of store cells.

### TRACKING STOCK AVAILABILITIES

The amount on hand tracking is performed by articles, transport means and stock cells. The cell booking in different sectors can be chaotic by observing the defined criteria or with fixed cells.

The following attributes can be tracked at goods transferring:

- Loads and serial numbers;
- Expiry date;
- Blocking for customs and quality control;
- Restrictions such as temperatures, taste, smell, etc.

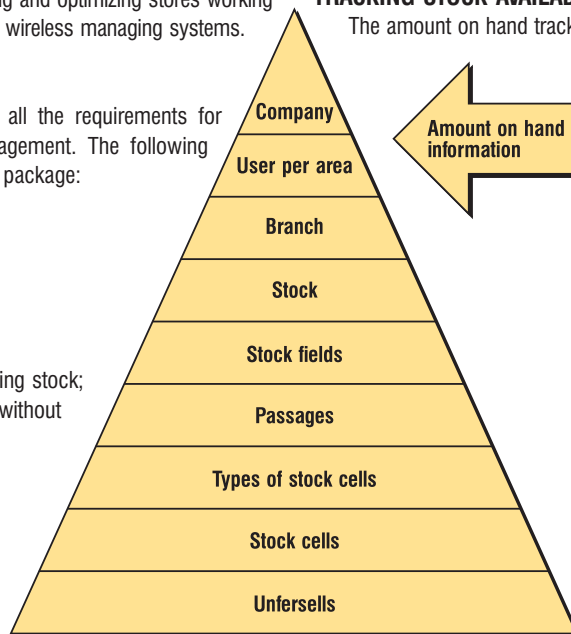
### TAKING IN GOODS

Deliveries from vendors are directly registered as active inventory on the basis of the bill of lading. Expected deliveries from the ERP system also

can be processed. The booking of stock cells and optimum transport means is made by the in-built store location strategies. There is an option for direct transfer of the goods to the store exit in order to avoid goods shortage.

### TAKING OUT GOODS

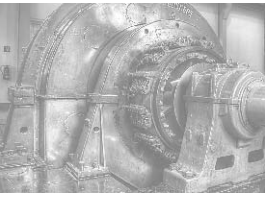
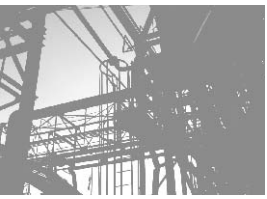
Requests for taking out goods from the store (clients' orders) are received from the ERP system or are entered through the stores, from which they will be commissioned. The logistics management centre supporting various commissioning strategies, provides strict control on clients' supplies.





Zertifiziert nach  
DIN EN ISO 9001:2000

**Microsoft  
CERTIFIED**  
Partner



## TRANSFERS IN THE STORE

Based on predefined information, the transferring processes run automatically for a defined plan. Onscreen suggestions are generated if necessary. Transfers of goods for filling in the stock are initiated by defining minimum or optimum quantities.

## SALES ON COMMISSION (WITH VOUCHER)

After disposing the orders according to the predefined strategies for taking goods out of the stock, commission lists or vouchers are printed. The feedback is realized by confirming the lists on the screen. The system supports multi-stage commissioning, commission store with automatically filling in the stock and optimization of the double runs.

## SALES ON COMMISSION WITHOUT VOUCHER

Sale on commission without voucher is made via mobile terminals. The real-time work provides synchronization of the information and material flow. The position check and the confirmation for the taken quantity is done via scanning barcode.

## PICK-BY-VOICE

Pick-by-Voice is a version of sale on commission without voucher based on a speech management system. It significantly improves the security of the process and increases the commissioning productivity with up to 35%. The advantage is due to the fact that the operator's hands are free, and he or she can look at the goods as it is not necessary to read from a terminal.

## DISPATCHING

This module takes care of the organizational process after the real taking out of the goods from the store. It manages the expedition zones and transport means, controls the goods packaging, administers the packaging means and conducts the electronic exchange with the shipping agents. The required shipping documents are also created here.

## INVENTORY

The purpose of the inventory is to take stock of the goods through counting, measuring and weighing.

**iFD digiStore** supports the following methods for making an inventory:

- complete inventory on a specified date;
- permanent inventory by stock cells;
- partial inventory;
- zero inventory;
- Check-by-Voice with speech management.

The parameterization of the inventory programs allows adaptation to the law and store specific requirements.

## FEE CALCULATION FOR STOCK SERVICES

In Shipping agents, you can set different companies (clients, goods owners). The services offered to the clients are calculated through the respective module that has the following features:

- Costs calculations for the store areas;
- Costs calculations for processes realization;
- Discounts for quantity;
- Unit and combined invoices.

## REPORTS

The powerful statistics module of **iFD digiStore** offers correct logistics indicators, supporting operational management for reaching optimum distribution of store areas and management of processes, personnel, capacities and amounts on hand.

**iFD digiStore** offers a number of standard forms, reports and statistics such as:

- Availability of stock/articles;
- Transfers in the store and types of transfers;

- Transfers in the stock cells;
- Capacity load of the store;
- ABC analysis;
- Long staying goods in the store

## INTERFACE COMMUNICATION

**iFD digiStore** offers multiple interfaces for data exchange with external systems such as ERP systems, customs documents processing, transport routes planning, optimization of freight space systems as well as automatic stores management, packaging machines, electronic scales, labeling devices, commissioning robots, etc.

## INNOVATION VIA WIRELESS COMMUNICATION

Binding the material and information flow is a challenge with significant potential for rationalization which facilitates the competitive advantage of a company.

- The benefit from mobile terminal communication is bilateral:
  - Reducing the capital in the store by reducing the stock availability;
  - Better utilization of the stock area through optimum strategies for booking stock cells;
  - Optimum load of the personnel and trucks by assigning routes and avoiding empty runs;
  - Decreasing the administrative tasks through direct registration in the information systems;
  - Increasing the reliability of the supplies

The open architecture of **iFD digiStore** allows establishing a paperless store with basic system that can be extended in the future according to the needs of the client.

## PROJECT REALIZATION

### Consultation

To improve efficiency, we analyze the logistics processes and the organization of material and information flows in your company and then develop specifications which will help you make your decision and give you an idea about the necessary **iFD digiStore** modules.

Together with you, we develop a concept for implementing **iFD digiStore**, define the interfaces and give you recommendations for the required hardware.

### Project management

An experienced project manager will be responsible for managing your project. It is important that there is also an authorized contact person from your side.

The project progress is documented and coordinated constantly with you so you can easily control the schedule and deadlines.

The quality assurance activities provide reviews, inspections and internal tests.

## SUPPORT

### Deployment and training

The largest part of the training is done alongside with the implementation. A test company and examples are available so you can start learning **iFD digiStore** even before launching it into production.

### Production

At the start of the production phase, we will provide support with advices and activities. Our experts will be onsite with you until you get used to the system.

### Long-term support

As we are responsible for the security of your investment, we guarantee long-term support. We offer standard support contracts, 24 hour open telephone line or taking full responsibility.